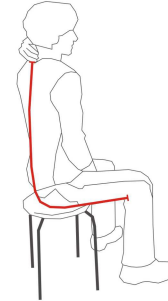




ZEROGRAVITY

CHOOSING HARNESS SIZE

1. Take the measure while seated, placing the measuring tape under your knee and continue to your neck as shown below.
2. Choose your harness size according to the table. If you seem to fit two sizes, add the seatplate width into account as well. If you think wider seat to be more comfortable, stay with bigger size. Remember that smaller sizes have lower suspension height. Difference of this height between sizes is 1 cm.



	109	110	111	112	113	114	115	116	117	118	119	120	121	122	123	124	125	126	127	128	129	130	131	132	133	134		
S	█																											
M							█																					
L											█																	
XL																█												
	Suspension height (cm)							Seat width – front/back (cm)							Seat depth (cm)							Back support height (cm)						
S	43							33/35							44							65						
M	44							33/35							47							68						
L	45							34/36							49							71						
XL	46							35/37							52							75						