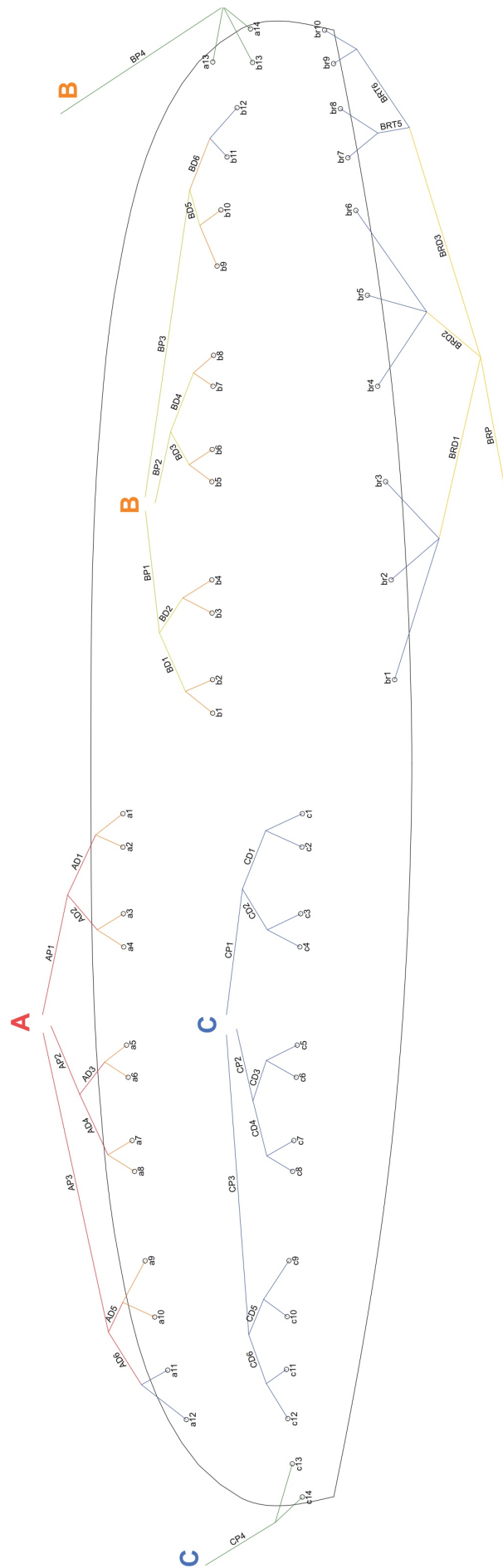




Service manual

# Touch

V13/08/2025





Lines

To service documents							Bridle checksheet lengths (mm)				
Design name: Touch - 15							Total line lengths measured from canopy down to top of risers				
Bridle measurements given in mm							a	b	c	br	
Name	3d Length 5 daN	Qty	Marking	Material	Colour	Offset	1	2	3	4	
br9	289	2	289	2 7343 090 372 0	Blue	100 / 100					
br10	349	2	349	2 7343 090 372 0	Blue	100 / 100					
c6	352	2	352	2 7343 090 372 0	Blue	100 / 100					
c7	359	2	359	2 7343 090 372 0	Blue	100 / 100					
c8	362	2	362	2 7343 090 372 0	Blue	100 / 100					
c2	365	2	365	2 7343 090 372 0	Blue	100 / 100					
br8	384	2	384	2 7343 090 372 0	Blue	100 / 100					
c3	386	2	386	2 7343 090 372 0	Blue	100 / 100					
c5	387	2	387	2 7343 090 372 0	Blue	100 / 100					
c4	389	2	389	2 7343 090 372 0	Blue	100 / 100					
c1	404	2	404	2 7343 090 372 0	Blue	100 / 100					
c12	432	2	432	2 7343 090 372 0	Blue	100 / 100					
c11	436	2	436	2 7343 090 372 0	Blue	100 / 100					
c10	438	2	438	2 7343 090 372 0	Blue	100 / 100					
BR15	439	2	439	2 7343 090 372 0	Blue	100 / 100					
br7	458	2	458	2 7343 090 372 0	Blue	100 / 100					
b12	500	2	500	2 7343 090 372 0	Blue	100 / 100					
b11	501	2	501	2 7343 090 372 0	Blue	100 / 100					
c9	518	2	518	2 7343 090 372 0	Blue	100 / 100					
BR16	524	2	524	2 7343 090 372 0	Blue	100 / 100					
a12	525	2	525	2 7343 090 372 0	Blue	100 / 100					
a11	534	2	534	2 7343 090 372 0	Blue	100 / 100					
br6	1372	2	1372	2 7343 090 372 0	Blue	100 / 100					
br5	1410	2	1410	2 7343 090 372 0	Blue	100 / 100					
br4	1567	2	1567	2 7343 090 372 0	Blue	100 / 100					
br3	1575	2	1575	2 7343 090 372 0	Blue	100 / 100					
br2	1649	2	1649	2 7343 090 372 0	Blue	100 / 100					
br1	1878	2	1878	2 7343 090 372 0	Blue	100 / 100					
a14	428	2	428	2 7343 090 400 0	Dark Green	100 / 100					
c14	458	2	458	2 7343 090 400 0	Dark Green	100 / 100					
b13	471	2	471	2 7343 090 400 0	Dark Green	100 / 100					
c13	501	2	501	2 7343 090 400 0	Dark Green	100 / 100					
a13	534	2	534	2 7343 090 400 0	Dark Green	100 / 100					
CP4	3709	2	3709	2 7343 090 400 0	Dark Green	100 / 100					
b6	349	2	349	2 7343 140 237 0	Orange	100 / 100					
b7	353	2	353	2 7343 140 237 0	Orange	100 / 100					
b8	357	2	357	2 7343 140 237 0	Orange	100 / 100					
b2	361	2	361	2 7343 140 237 0	Orange	100 / 100					
b3	382	2	382	2 7343 140 237 0	Orange	100 / 100					
b5	382	2	382	2 7343 140 237 0	Orange	100 / 100					
b4	385	2	385	2 7343 140 237 0	Orange	100 / 100					
b1	400	2	400	2 7343 140 237 0	Orange	100 / 100					
a6	425	2	425	2 7343 140 237 0	Orange	100 / 100					
a7	429	2	429	2 7343 140 237 0	Orange	100 / 100					
a8	430	2	430	2 7343 140 237 0	Orange	100 / 100					
a2	442	2	442	2 7343 140 237 0	Orange	100 / 100					
a5	457	2	457	2 7343 140 237 0	Orange	100 / 100					
a3	461	2	461	2 7343 140 237 0	Orange	100 / 100					
a4	462	2	462	2 7343 140 237 0	Orange	100 / 100					
a1	476	2	476	2 7343 140 237 0	Orange	100 / 100					
b10	586	2	586	2 7343 140 237 0	Orange	100 / 100					
b9	664	2	664	2 7343 140 237 0	Orange	100 / 100					
a10	722	2	722	2 7343 140 237 0	Orange	100 / 100					
a9	806	2	806	2 7343 140 237 0	Orange	100 / 100					
BD6	917	2	917	2 7343 140 237 0	Orange	100 / 100					
BRD2	1836	2	1836	2 7343 140 237 0	Orange	100 / 100					
BRD1	1986	2	1986	2 7343 140 237 0	Orange	100 / 100					
BRD3	2227	2	2227	2 7343 140 237 0	Orange	100 / 100					
CD6	978	2	978	2 7343 140 372 0	Blue	100 / 100					
CD5	1037	2	1037	2 7343 140 372 0	Blue	100 / 100					
CD4	1106	2	1106	2 7343 140 372 0	Blue	100 / 100					
CD3	1146	2	1146	2 7343 140 372 0	Blue	100 / 100					
CD2	1199	2	1199	2 7343 140 372 0	Blue	100 / 100					
CD1	1256	2	1256	2 7343 140 372 0	Blue	100 / 100					
BP4	3733	2	3733	2 7343 140 400 0	Dark Green	100 / 100					
BD5	883	2	883	2 7343 190 114 0	Yellow	100 / 100					
BD4	1094	2	1094	2 7343 190 114 0	Yellow	100 / 100					
BD3	1130	2	1130	2 7343 190 114 0	Yellow	100 / 100					
BD2	1186	2	1186	2 7343 190 114 0	Yellow	100 / 100					
BD1	1243	2	1243	2 7343 190 114 0	Yellow	100 / 100					
AD5	802	2	802	2 7343 190 222 0	Red	100 / 100					
AD6	936	2	936	2 7343 190 222 0	Red	100 / 100					
AD4	1172	2	1172	2 7343 190 222 0	Red	100 / 100					
AD3	1210	2	1210	2 7343 190 222 0	Red	100 / 100					
AD2	1320	2	1320	2 7343 190 222 0	Red	100 / 100					
AD1	1373	2	1373	2 7343 190 222 0	Red	100 / 100					
CP3	2997	2	2997	2 7343 190 372 0	Blue	100 / 100					
CP1	3164	2	3164	2 7343 190 372 0	Blue	100 / 100					
CP2	3165	2	3165	2 7343 190 372 0	Blue	100 / 100					
BP3	2951	2	2951	PPSLS-0180-05	Yellow	120 / 120					
BP1	3105	2	3105	PPSLS-0180-05	Yellow	120 / 120					
BP2	3110	2	3110	PPSLS-0180-05	Yellow	120 / 120					
AP3	2955	2	2955	PPSLS-0180-17	Red	120 / 120					
AP1	2954	2	2954	PPSLS-0200-17	Red	120 / 120					
AP2	3018	2	3018	PPSLS-0200-17	Red	120 / 120					
BRP	1194	2	1194	2 7343 280 237 0	Orange	100 / 100					



Lines

To service documents											
Design name: Touch - 18											
Bridle measurements given in mm											
Name	3d Length 5 daN	Qty	Marking	Material	Colour	Offset	Bridle checksheet lengths (mm)				
							Total line lengths measured from canopy down to top of risers				
							a	b	c	br	
br9	316	2	316	2 7343 090 372 0	Blue	100 / 100					
br10	383	2	383	2 7343 090 372 0	Blue	100 / 100					
c6	387	2	387	2 7343 090 372 0	Blue	100 / 100	1	6005	5942	6030	6473
c7	392	2	392	2 7343 090 372 0	Blue	100 / 100	2	5969	5902	5990	6225
c8	396	2	396	2 7343 090 372 0	Blue	100 / 100	3	5935	5866	5954	6145
c2	402	2	402	2 7343 090 372 0	Blue	100 / 100	4	5937	5871	5959	5975
br8	421	2	421	2 7343 090 372 0	Blue	100 / 100	5	5885	5817	5903	5806
c3	422	2	422	2 7343 090 372 0	Blue	100 / 100	6	5850	5781	5866	5766
c5	424	2	424	2 7343 090 372 0	Blue	100 / 100	7	5815	5748	5830	5665
c4	427	2	427	2 7343 090 372 0	Blue	100 / 100	8	5816	5753	5834	5584
c1	442	2	442	2 7343 090 372 0	Blue	100 / 100	9	5737	5668	5747	5575
c12	473	2	473	2 7343 090 372 0	Blue	100 / 100	10	5645	5582	5659	5641
c11	478	2	478	2 7343 090 372 0	Blue	100 / 100	11	5596	5527	5592	
c10	480	2	480	2 7343 090 372 0	Blue	100 / 100	12	5575	5525	5587	
BRT5	480	2	480	2 7343 090 372 0	Blue	100 / 100	13	5443	5374	5387	
br7	502	2	502	2 7343 090 372 0	Blue	100 / 100	14	5325		5340	
b12	547	2	547	2 7343 090 372 0	Blue	100 / 100					
b11	549	2	549	2 7343 090 372 0	Blue	100 / 100					
c9	568	2	568	2 7343 090 372 0	Blue	100 / 100					
a12	574	2	574	2 7343 090 372 0	Blue	100 / 100					
BRT6	576	2	576	2 7343 090 372 0	Blue	100 / 100					
a11	585	2	585	2 7343 090 372 0	Blue	100 / 100					
br6	1507	2	1507	2 7343 090 372 0	Blue	100 / 100					
br5	1546	2	1546	2 7343 090 372 0	Blue	100 / 100					
br4	1715	2	1715	2 7343 090 372 0	Blue	100 / 100					
br3	1728	2	1728	2 7343 090 372 0	Blue	100 / 100					
br2	1808	2	1808	2 7343 090 372 0	Blue	100 / 100					
br1	2056	2	2056	2 7343 090 372 0	Blue	100 / 100					
a14	467	2	467	2 7343 090 400 0	Dark Green	100 / 100					
c14	501	2	501	2 7343 090 400 0	Dark Green	100 / 100					
b13	515	2	515	2 7343 090 400 0	Dark Green	100 / 100					
c13	548	2	548	2 7343 090 400 0	Dark Green	100 / 100					
a13	585	2	585	2 7343 090 400 0	Dark Green	100 / 100					
CP4	4144	2	4144	2 7343 090 400 0	Dark Green	100 / 100					
b6	383	2	383	2 7343 140 237 0	Orange	100 / 100					
b7	387	2	387	2 7343 140 237 0	Orange	100 / 100					
b8	392	2	392	2 7343 140 237 0	Orange	100 / 100					
b2	397	2	397	2 7343 140 237 0	Orange	100 / 100					
b3	417	2	417	2 7343 140 237 0	Orange	100 / 100					
b5	419	2	419	2 7343 140 237 0	Orange	100 / 100					
b4	422	2	422	2 7343 140 237 0	Orange	100 / 100					
b1	438	2	438	2 7343 140 237 0	Orange	100 / 100					
a6	466	2	466	2 7343 140 237 0	Orange	100 / 100					
a7	470	2	470	2 7343 140 237 0	Orange	100 / 100					
a8	471	2	471	2 7343 140 237 0	Orange	100 / 100					
a2	486	2	486	2 7343 140 237 0	Orange	100 / 100					
a5	501	2	501	2 7343 140 237 0	Orange	100 / 100					
a3	504	2	504	2 7343 140 237 0	Orange	100 / 100					
a4	506	2	506	2 7343 140 237 0	Orange	100 / 100					
a1	522	2	522	2 7343 140 237 0	Orange	100 / 100					
b10	642	2	642	2 7343 140 237 0	Orange	100 / 100					
b9	728	2	728	2 7343 140 237 0	Orange	100 / 100					
a10	790	2	790	2 7343 140 237 0	Orange	100 / 100					
a9	882	2	882	2 7343 140 237 0	Orange	100 / 100					
BD6	1004	2	1004	2 7343 140 237 0	Orange	100 / 100					
BRD2	2014	2	2014	2 7343 140 237 0	Orange	100 / 100					
BRD1	2172	2	2172	2 7343 140 237 0	Orange	100 / 100					
BRD3	2447	2	2447	2 7343 140 237 0	Orange	100 / 100					
CD6	1070	2	1070	2 7343 140 372 0	Blue	100 / 100					
CD5	1136	2	1136	2 7343 140 372 0	Blue	100 / 100					
CD4	1213	2	1213	2 7343 140 372 0	Blue	100 / 100					
CD3	1255	2	1255	2 7343 140 372 0	Blue	100 / 100					
CD2	1317	2	1317	2 7343 140 372 0	Blue	100 / 100					
CD1	1373	2	1373	2 7343 140 372 0	Blue	100 / 100					
BP4	4168	2	4168	2 7343 140 400 0	Dark Green	100 / 100					
BD5	967	2	967	2 7343 190 114 0	Yellow	100 / 100					
BD4	1200	2	1200	2 7343 190 114 0	Yellow	100 / 100					
BD3	1237	2	1237	2 7343 190 114 0	Yellow	100 / 100					
BD2	1304	2	1304	2 7343 190 114 0	Yellow	100 / 100					
BD1	1359	2	1359	2 7343 190 114 0	Yellow	100 / 100					
AD5	879	2	879	2 7343 190 222 0	Red	100 / 100					
AD6	1024	2	1024	2 7343 190 222 0	Red	100 / 100					
AD4	1285	2	1285	2 7343 190 222 0	Red	100 / 100					
AD3	1325	2	1325	2 7343 190 222 0	Red	100 / 100					
AD2	1449	2	1449	2 7343 190 222 0	Red	100 / 100					
AD1	1502	2	1502	2 7343 190 222 0	Red	100 / 100					
CP3	3363	2	3363	2 7343 190 372 0	Blue	100 / 100					
CP1	3535	2	3535	2 7343 190 372 0	Blue	100 / 100					
CP2	3544	2	3544	2 7343 190 372 0	Blue	100 / 100					
BP3	3313	2	3313	PPSLS-0180-05	Yellow	120 / 120					
BP1	3470	2	3470	PPSLS-0180-05	Yellow	120 / 120					
BP2	3486	2	3486	PPSLS-0180-05	Yellow	120 / 120					
AP3	3316	2	3316	PPSLS-0180-17	Red	120 / 120					
AP1	3306	2	3306	PPSLS-0200-17	Red	120 / 120					
AP2	3385	2	3385	PPSLS-0200-17	Red	120 / 120					
BRP	1396	2	1396	2 7343 280 237 0	Orange	100 / 100					





Lines

To service documents											
<b>Design name: Touch - 26</b>											
Bridle measurements given in mm											
Name	3d Length 5 daN	Qty	Marking	Material	Colour	Offset	Bridle checksheet lengths (mm)				
							Total line lengths measured from canopy down to top of risers				
							a	b	c	br	
br9	379	2	379	2 7343 090 372 0	Blue	100 / 100					
br10	460	2	460	2 7343 090 372 0	Blue	100 / 100					
c6	466	2	466	2 7343 090 372 0	Blue	100 / 100	1	7225	7148	7251	7783
c7	471	2	471	2 7343 090 372 0	Blue	100 / 100	2	7186	7103	7206	7489
c8	477	2	477	2 7343 090 372 0	Blue	100 / 100	3	7151	7067	7170	7399
c2	486	2	486	2 7343 090 372 0	Blue	100 / 100	4	7157	7077	7179	7199
c3	505	2	505	2 7343 090 372 0	Blue	100 / 100	5	7101	7019	7119	7001
c5	509	2	509	2 7343 090 372 0	Blue	100 / 100	6	7061	6978	7076	6958
br8	509	2	509	2 7343 090 372 0	Blue	100 / 100	7	7021	6941	7037	6841
c4	514	2	514	2 7343 090 372 0	Blue	100 / 100	8	7024	6949	7043	6746
c1	531	2	531	2 7343 090 372 0	Blue	100 / 100	9	6931	6850	6940	6738
c12	569	2	569	2 7343 090 372 0	Blue	100 / 100	10	6819	6746	6833	6819
c11	575	2	575	2 7343 090 372 0	Blue	100 / 100	11	6747	6679	6752	
BRT5	575	2	575	2 7343 090 372 0	Blue	100 / 100	12	6733	6676	6745	
c10	576	2	576	2 7343 090 372 0	Blue	100 / 100	13	6571	6487	6505	
br7	603	2	603	2 7343 090 372 0	Blue	100 / 100	14	6427		6446	
b12	657	2	657	2 7343 090 372 0	Blue	100 / 100					
b11	660	2	660	2 7343 090 372 0	Blue	100 / 100					
c9	683	2	683	2 7343 090 372 0	Blue	100 / 100					
a12	690	2	690	2 7343 090 372 0	Blue	100 / 100					
BRT6	696	2	696	2 7343 090 372 0	Blue	100 / 100					
a11	704	2	704	2 7343 090 372 0	Blue	100 / 100					
br6	1817	2	1817	2 7343 090 372 0	Blue	100 / 100					
br5	1860	2	1860	2 7343 090 372 0	Blue	100 / 100					
br4	2058	2	2058	2 7343 090 372 0	Blue	100 / 100					
br3	2084	2	2084	2 7343 090 372 0	Blue	100 / 100					
br2	2174	2	2174	2 7343 090 372 0	Blue	100 / 100					
br1	2468	2	2468	2 7343 090 372 0	Blue	100 / 100					
a14	559	2	559	2 7343 090 400 0	Dark Green	100 / 100					
c14	600	2	600	2 7343 090 400 0	Dark Green	100 / 100					
b13	619	2	619	2 7343 090 400 0	Dark Green	100 / 100					
c13	659	2	659	2 7343 090 400 0	Dark Green	100 / 100					
a13	703	2	703	2 7343 090 400 0	Dark Green	100 / 100					
CP4	5151	2	5151	2 7343 090 400 0	Dark Green	100 / 100					
b6	461	2	461	2 7343 140 237 0	Orange	100 / 100					
b7	464	2	464	2 7343 140 237 0	Orange	100 / 100					
b8	471	2	471	2 7343 140 237 0	Orange	100 / 100					
b2	481	2	481	2 7343 140 237 0	Orange	100 / 100					
b3	500	2	500	2 7343 140 237 0	Orange	100 / 100					
b5	503	2	503	2 7343 140 237 0	Orange	100 / 100					
b4	509	2	509	2 7343 140 237 0	Orange	100 / 100					
b1	525	2	525	2 7343 140 237 0	Orange	100 / 100					
a6	561	2	561	2 7343 140 237 0	Orange	100 / 100					
a7	564	2	564	2 7343 140 237 0	Orange	100 / 100					
a8	567	2	567	2 7343 140 237 0	Orange	100 / 100					
a2	587	2	587	2 7343 140 237 0	Orange	100 / 100					
a5	602	2	602	2 7343 140 237 0	Orange	100 / 100					
a3	604	2	604	2 7343 140 237 0	Orange	100 / 100					
a4	610	2	610	2 7343 140 237 0	Orange	100 / 100					
a1	627	2	627	2 7343 140 237 0	Orange	100 / 100					
b10	771	2	771	2 7343 140 237 0	Orange	100 / 100					
b9	875	2	875	2 7343 140 237 0	Orange	100 / 100					
a10	949	2	949	2 7343 140 237 0	Orange	100 / 100					
a9	1060	2	1060	2 7343 140 237 0	Orange	100 / 100					
BD6	1206	2	1206	2 7343 140 237 0	Orange	100 / 100					
BRD2	2427	2	2427	2 7343 140 237 0	Orange	100 / 100					
BRD1	2601	2	2601	2 7343 140 237 0	Orange	100 / 100					
BRD3	2959	2	2959	2 7343 140 237 0	Orange	100 / 100					
CD6	1285	2	1285	2 7343 140 372 0	Blue	100 / 100					
CD5	1366	2	1366	2 7343 140 372 0	Blue	100 / 100					
CD4	1462	2	1462	2 7343 140 372 0	Blue	100 / 100					
CD3	1506	2	1506	2 7343 140 372 0	Blue	100 / 100					
CD2	1590	2	1590	2 7343 140 372 0	Blue	100 / 100					
CD1	1646	2	1646	2 7343 140 372 0	Blue	100 / 100					
BP4	5178	2	5178	2 7343 140 400 0	Dark Green	100 / 100					
BD5	1163	2	1163	2 7343 190 114 0	Yellow	100 / 100					
BD4	1446	2	1446	2 7343 190 114 0	Yellow	100 / 100					
BD3	1485	2	1485	2 7343 190 114 0	Yellow	100 / 100					
BD2	1574	2	1574	2 7343 190 114 0	Yellow	100 / 100					
BD1	1629	2	1629	2 7343 190 114 0	Yellow	100 / 100					
AD5	1057	2	1057	2 7343 190 222 0	Red	100 / 100					
AD6	1229	2	1229	2 7343 190 222 0	Red	100 / 100					
AD4	1548	2	1548	2 7343 190 222 0	Red	100 / 100					
AD3	1590	2	1590	2 7343 190 222 0	Red	100 / 100					
AD2	1749	2	1749	2 7343 190 222 0	Red	100 / 100					
AD1	1801	2	1801	2 7343 190 222 0	Red	100 / 100					
CP3	4212	2	4212	2 7343 190 372 0	Blue	100 / 100					
CP1	4394	2	4394	2 7343 190 372 0	Blue	100 / 100					
CP2	4424	2	4424	2 7343 190 372 0	Blue	100 / 100					
BP3	4152	2	4152	PPSLS-0180-05	Yellow	120 / 120					
BP1	4318	2	4318	PPSLS-0180-05	Yellow	120 / 120					
BP2	4356	2	4356	PPSLS-0180-05	Yellow	120 / 120					
AP3	4154	2	4154	PPSLS-0180-17	Red	120 / 120					
AP1	4123	2	4123	PPSLS-0200-17	Red	120 / 120					
AP2	4234	2	4234	PPSLS-0200-17	Red	120 / 120					
BRP	1864	2	1864	2 7343 280 237 0	Orange	100 / 100					



1. Steering line
2. B-Ball handle
3. Control handle
4. Control handle loop
5. Main attachment point
6. Stabilizing elastic for the handle
7. Neutral point marker
8. Auxiliary markings